



*IMPIANTI DI BETONAGGIO & MACCHINE EDILI
BATCHING PLANT & BUILDING MACHINERY
CENTRALES À BÉTON et MACHINES DE CHANTIER
BETONMISCHALANGEN und BAUMASCHINEN*

**CALCESTRUZZO DI QUALITÀ
TOP QUALITY CONCRETE
BÉTON DE QUALITÉ
HOCHWERTIG BETON**



TTM

*IMPIANTI COMPONENTI CON TURBOMESCOLATORE
MODULAR PLANTS WITH PAN MIXERS
INSTALLATIONS A ELEMENTS AVEC DES TURBOMALAXEURS
ZUSAMMENSETZBARE ANLAGE MIT ZWANGSMISCHER*



IMPIANTI COMPONENTI CON TURBOMESCOLATORI SERIE: TTM

🔧 Impianto di betonaggio con turbo mescolatore, raggio raschiante serie Minor, scarico manuale, quadro elettrico norme CEI, CE



MODULAR PLANTS WITH PAN MIXERS SERIES: TTM

🔧 Concrete mixing plant with pan mixer, scraper arm series Minor, manual discharge, electric board CEI, CE specifications



INSTALLATIONS A ELEMENTS AVEC DES TURBOMALAXEURS SERIE: TTM

🔧 Installation de bétonnage avec turbomalaxeur, rayon raclant série Minor, déchargement manuel, tableau électrique conforme aux normes CEI, CE



ZUSAMMENSETZBARE ANLAGE MIT ZWANGSMISCHER SERIE: TTM

🔧 Betonmischung Anlage mit Zwangsmischer, radius scheidende Minor, manuelle entladung, Schalttafel Normen CEI, WIR



Dati tecnici



Technical features

**TTM
400/402**

**TTM
500/502**

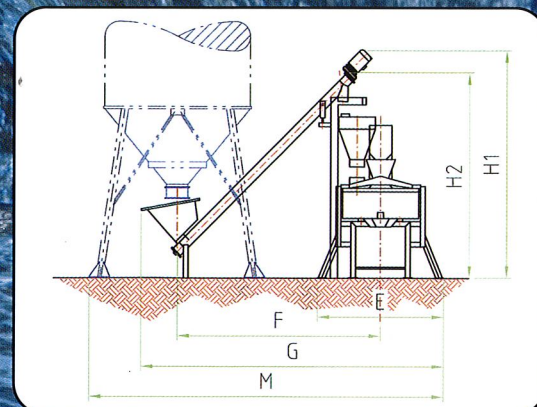
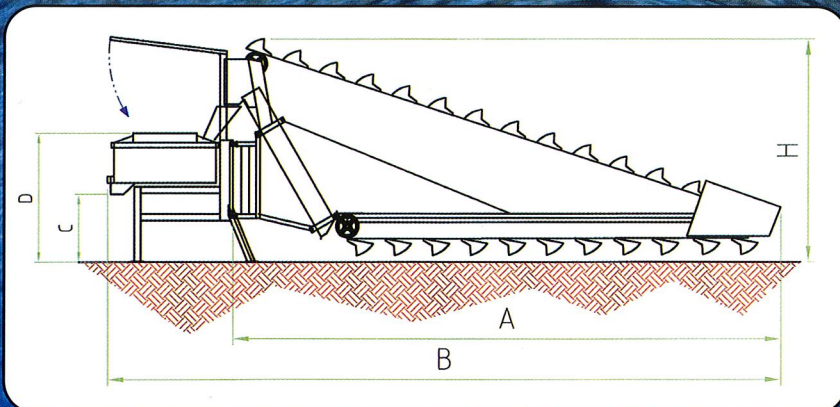


Données techniques



Technische Angaben

Diametro vasca mixer	<i>Mixer diameter</i>	1130	mm.	1262	Diamètre cuve	<i>Beckendurchmesser</i>
Capacità di carico	<i>Load capacity</i>	500	mm.	500	Volume cuve	<i>Nutzliches becken-volumen</i>
Resa soffice	<i>Soft yield</i>	300	Lt.	400	Débit béton frais	<i>Weiches Ergebnis</i>
Bracci mescolazione	<i>Mixing arms</i>	2+2	n°	2+2	Bras de malaxage	<i>Mischen Ausleger</i>
Potenza motore mixer	<i>Mixer motor power</i>	9.2	KW	9.2	Puissance moteur mixer	<i>Mishermotorleistung</i>
Potenza raggio		2.2	KW	2.2		
Potenza totale installata	<i>Installed power</i>	11.4	KW	11.4	Puissance totale installée	<i>Gesamte installierte</i>
Assorbimento	<i>Total absorption</i>	22.8	A	22.8	Absorption totale	<i>Absorption</i>



	A	B	C	D	E	F	G	M	H	H1	H2		a	b	h
	mm	mm	mm	mm	mm	mm	mm	mm	mm	mm	mm		mm	mm	mm
TTM 400	5800	7170	830	1500	1700	2830	4750	5700	2580	3760	34	DIMENSIONI DI TRASPORTO	1700	2800	2450
TTM 500	6900	8400	840	1600	2120	3400	5100	6000	2510	3460	3410	TRANSPORT DIMENSIONS	2120	3000	2570
												DIMENSIONS DE TRANSPORT			
												TRANSPORT DIMENSIONEN			

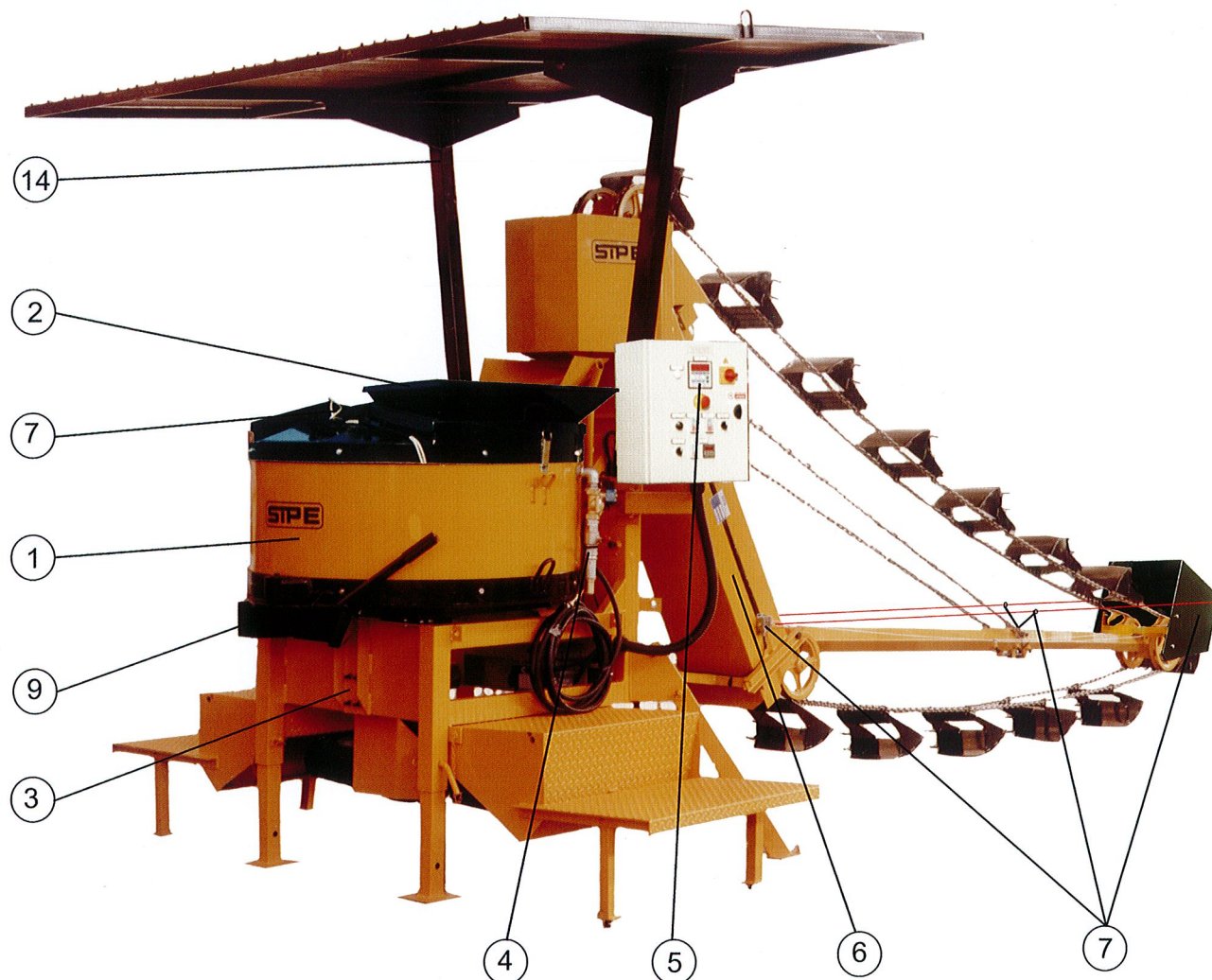


🔧 Dati e misure sono da considerarsi puramente indicative la SIPE s.r.l. si riserva di apportare modifiche senza preavviso

- ① Per ulteriori e diverse posizioni di montaggio rivolgersi all'Uff. Tecnico
- ① Per informazioni sugli ingombri rivolgersi all'Uff. Tecnico

🔧 Datas and measures are to be considered essentially approximate. SIPE s.r.l. reserves the right to make changes without previous notice

- ① For further informations might you have about different positions and layouts get in touch with our technical dept.
- ① For further informations might you have about overall dimension get in touch with our technical dept.



- 1 MESCOLATORE
- 2 TRAMOGGIA CARICO CEMENTO
- 3 TELAIO CON PEDANA INCORPORATA
- 4 IMPIANTO ACQUA TEMPORIZZATO
- 5 DOSAGGIO INERTI
- 6 RAGGIO RASCHIANTE DA 1 O 2 INERTI(*)
- 7 PROTEZIONI DI SICUREZZA
- 8 (*)RUOTE E TIMONE
- 9 APERTURA MANUALE O IDRAULICA (*)
- 10 (*)DOSAGGIO CEMENTO "PRATIC E"
- 11 (*)CESTONE
- 12 (*)BENNA
- 13 (*)ZINCATURA(VEDI COPERTINA)
- 14 (*)TETTOIA DI PROTEZIONE
- 15 (*)COCLEA PER SILO
- 16 (*)SILO DA 15 / 23 / 29 MC
- 17 (*)COCLEA CON TRAMOGGIA ROMPI SACCHI
- (*) SUPPLEMENTI



- 1 MIXER
- 2 CEMENT CHARGING HOPPER
- 3 FRAME WITH BUILT-IN ACCESS STEPS
- 4 TIMED WATER DISPENSING
- 5 AGGREGATE BATCH CONTROL
- 6 SCRAPER ARM FOR 1 OR 2 AGGREGATES (*)
- 7 SAFETY GUARDING
- 8 (*) TRANSPORT WHEELS AND DRAWBAR
- 9 MIXER DOOR OPENING MANUAL OR HYDRAULIC (*)
- 10 (*) CEMENT WEIGH BATCHING "PRATIC E"
- 11 (*) HOLDING GRAB
- 12 (*) BUCKET
- 13 (*) GALVANIZING
- 14 (*) SAFETY ROOF
- 15 (*) CEMENT SCREW
- 16 (*) 15 / 23 / 29 CEMENT SILO
- 17 (*) SCREW WITH SACK-BREAKER HOPPER
- (*) OPTIONS

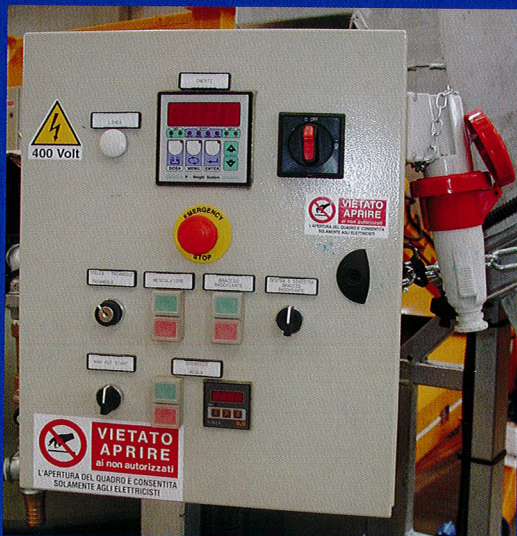
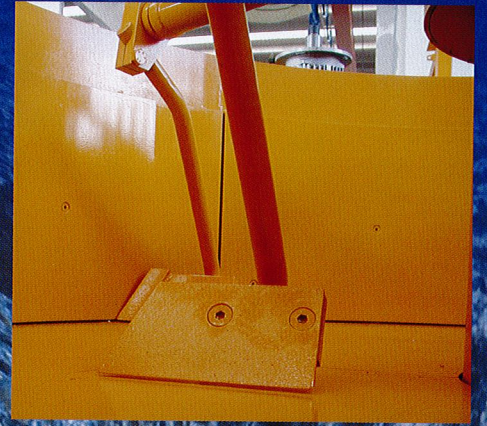
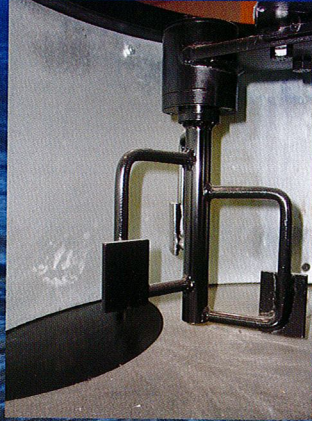
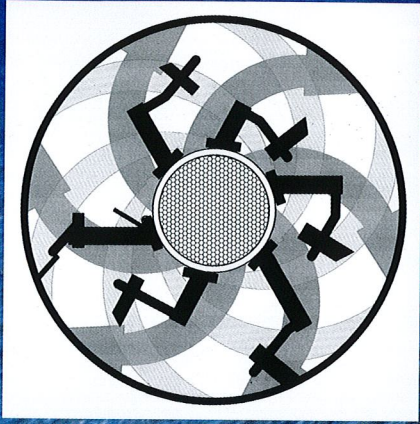
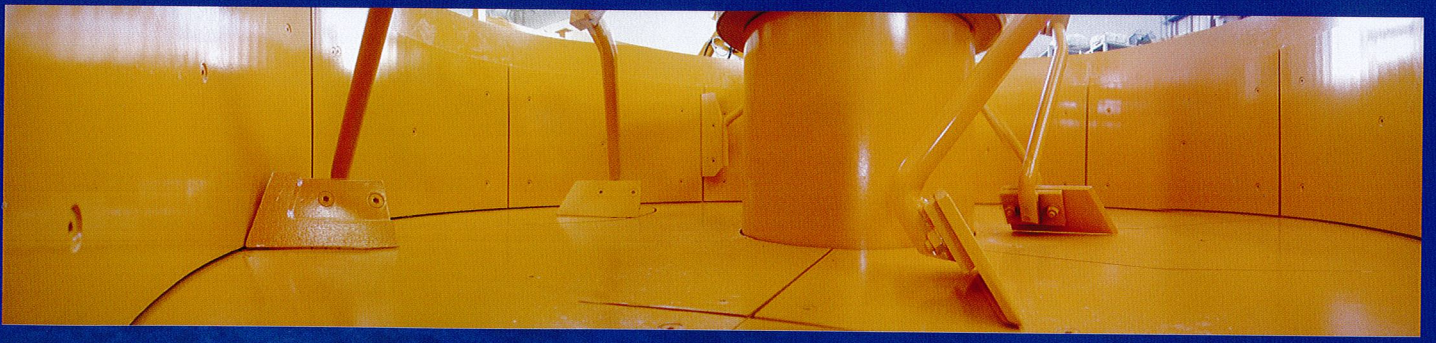


- 1 MALAXEUR
- 2 TREMIE CHARGEMENT CIMENT
- 3 CHASSIS AVEC ESTRADE INCORPOREE
- 4 INSTALLATION TEMPORISEE DE L'EAU
- 5 DOSAGE AGGREGATS
- 6 RAYON RACLANT DE 1 OU 2 AGGREGATS (*)
- 7 PROTECTIONS DE SECURITE
- 8 (*) ROUES ET GOUVERNAIL
- 9 OUVERTURE MANUELLE OU (*) HYDRAULIQUE
- 10 (*) DOSAGE CIMENT "PRATIC E"
- 11 (*) PANIER
- 12 (*) BENNE
- 13 (*) ZINGAGE (CF. COUVERTURE)
- 14 (*) TOITURE DE PROTECTION
- 15 (*) VIS A CIMENT
- 16 (*) SILO DE 15 / 23 / 29 MC
- 17 (*) VIS A CIMENT AVEC TREMIE CREVE-SACS
- (*) SUPPLEMENTES



- 1 MISCHER
- 2 TRICHTER ZEMENT LADUNG
- 3 WEBSTUHL MIT EINGEBAUTEM TRITTBRETT
- 4 WASSER ZEITGEBER ANLAGE
- 5 TRÄGE DOSIERUNG
- 6 SCHEIBENDE RADIUS VON 1 ODER 2 TRÄGE (*)
- 7 SICHERHEIT SCHÜTZE
- 8 (*) RÄDER UND RUDER
- 9 MANUELLE ODER HYDRAULISCHE ÖFFNUNG (*)
- 10 (*) ZEMENT DOSIERUNG "PRATIC E"
- 11 (*) KORB
- 12 (*) GREIFER
- 13 (*) VERZINKUNG (SIEHE BUCHDECKEL)
- 14 (*) SCHUTZ WETTERDACH
- 15 (*) SCHNECKE FÜR SILO
- 16 (*) SILO VON 15 / 23 / 29 MC
- 17 (*) SCHNECKE MIT SACKBRECHER TRICHTER
- (*) NACHTRÄGE







MACCHIMPORT SA
MACCHINE E UTENSILI PER L'EDILIZIA

Via Maito 18 • CH-6804 Bironico • Tel. +41 91 936 12 00
www.macchimport.ch • info@macchimport.ch

